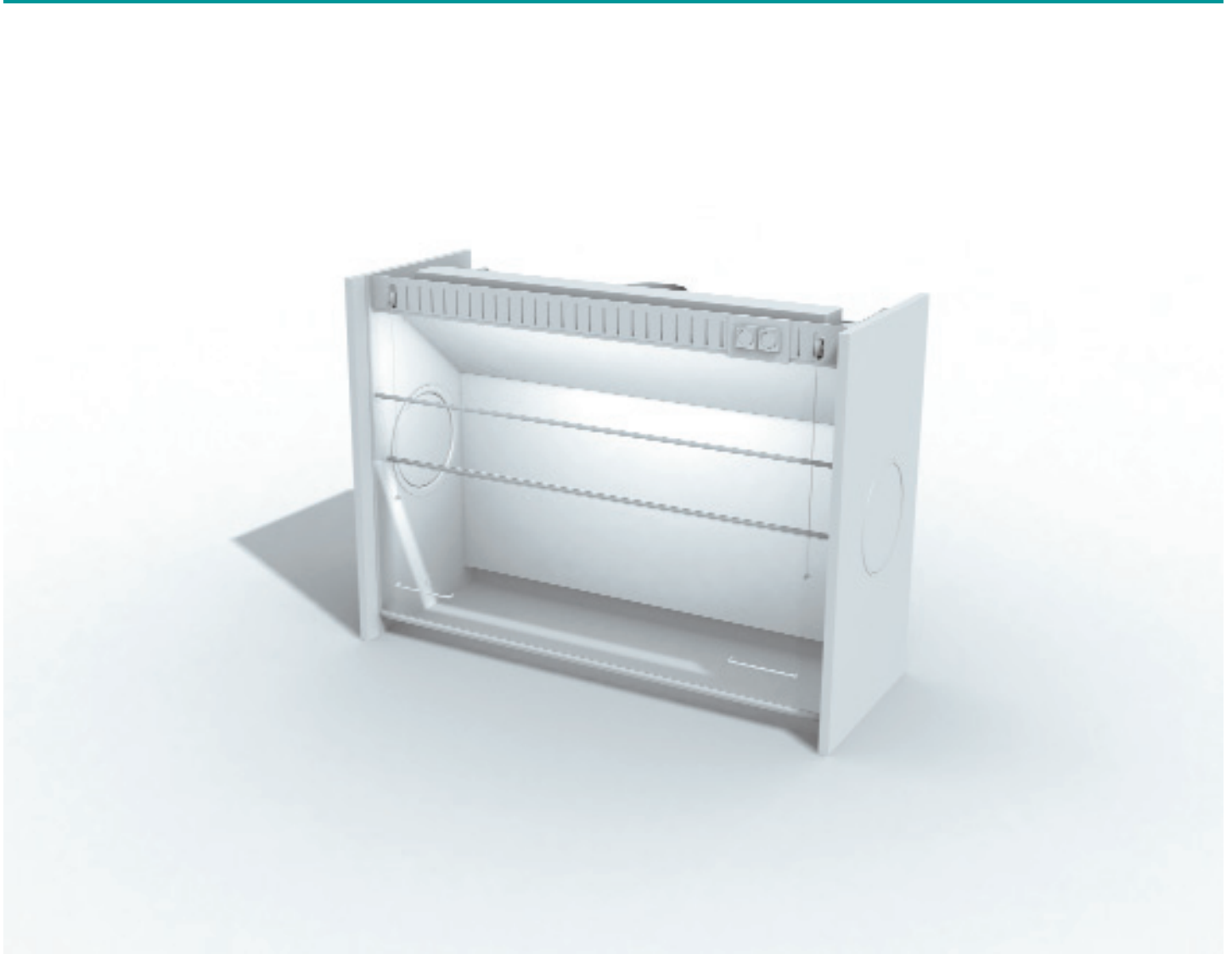


Benchtop Fume cupboard

General purpose fume cupboard

FUME CUPBOARDS



The Benchtop Fume cupboard is easy to move and requires only a modest amount of space. The flexible option in fume cupboards.

PERFORMANCE FIGURES IN FOUR DIMENSIONS



Benchtup Fume cupboard (1000/1500)

TECHNICAL SPECIFICATIONS	
carcass	back of hard plastic faced multiplex and sides in solid core panels
airflow baffles	6 mm white solid core panels
tilted airflow baffles	6 mm toughened glass
vertical sliding doors	6 mm toughened glass, safety latch
electrical	Berker Mobil R-IP 44 in black
lighting	TLD 500 lux
under cupboard closed	sliding doors without ventilation
option I	worktop toughened glass with barrage
option II	worktop spoiler in epoxied metal

DIMENSIONS		BENCHTOP 1000	BENCHTOP 1500
outside	wide	1000	1500
inside	wide	966	1466
outside	deep	593	730
inside	deep	434	571
outside	high	1100	1100
inside	high	1000	1000

AIRFLOW ANALYSIS				
Benchtup Fume cupboard	$V=0.3$ m/s (normal operating setting 475 mm)	Q_1 extraction volume	Q_1 pressure differential	duct outlet size
	m ³ /h	Pa	mm	
1000	510	30	200	
1500	780	30	250	

CERTIFICATION

The Benchtup Fume cupboard complies with the UK safety standards for air cabinets and is tested and certified according to the British BS 7258 part 1 and 4, the German DIN 12924 part 1, the European prEN 14175 part 3.

For more information visit www.splusb.co.uk.