

# Octopod



*Furniture for the Science Classroom Environment*

# Innovative laboratory furniture, creating a modern learning environment

S+B Europe's premier specialist in the design, manufacture and installation of school furniture systems.

## Designed to Perform

**The Octopod – a British design now supplied extensively into schools world wide.**

- Contrary to perception, the Octopod is highly space efficient and can more readily accommodate up to 32 students in smaller rooms than would be the case with traditional bench rows.
- Octopods can be grouped and arranged in different ways to suit student numbers, teacher preferred address position(s), room size and shape.
- Octopods promote group work and allow students to easily adjust sitting position to face in one direction for whole class address.
- Feedback has shown that over 90% of students would prefer a less formal, contemporary Science Laboratory design rather than a traditional, regimented, bench row furniture layout.





- Octopods facilitate generous circulation space and results in fewer non compliances with Health and Safety gangway recommendations than would be the case with traditional bench rows in smaller rooms.
- A popular configuration is the 'bar bell' layout. Two Octopods are connected to each other with a plain, single sink, or double sink link unit.
- Octopods easily facilitate more than one teacher address position and promotes modern pedagogy.
- Services can be carried through linked modules, which reduces any requirement for floor trenching and service delivery costs.



## Worktops

The Octopod shape and standard size lends itself to worktop materials with good fabrication qualities for seamless jointing and an impervious easy to clean surface.

The combination of shape and modern solid surface worktops provides a very compelling, modern aesthetic which stimulates and motivates students.

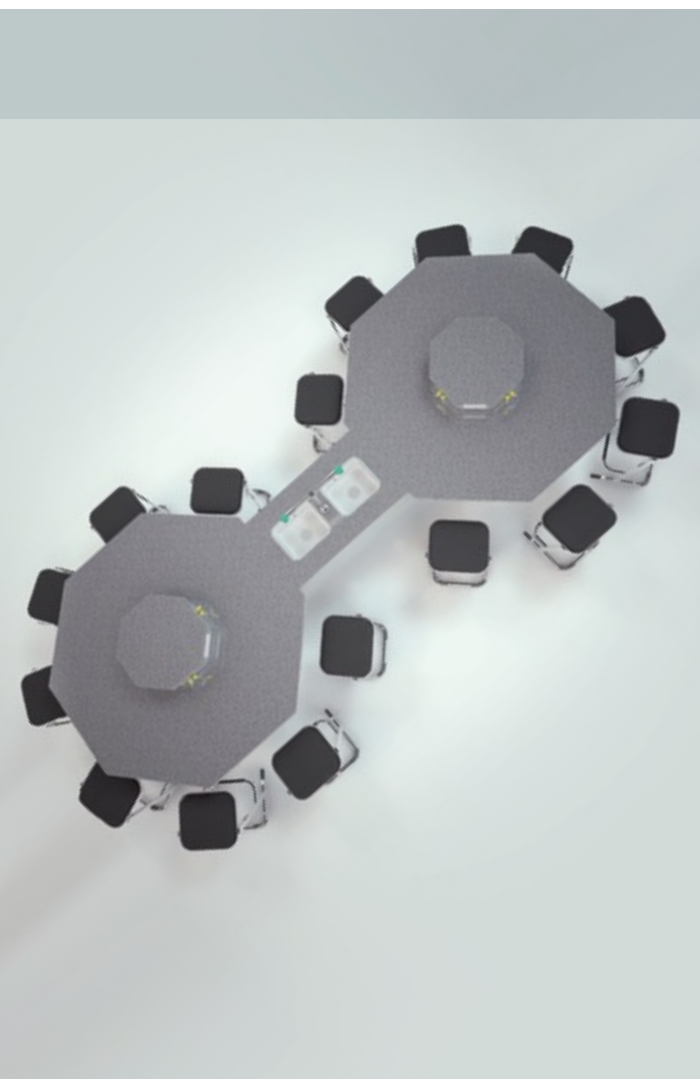
Corian is the time proven solid surface material which provides a flat, stable, impervious, chemically resistant, easy to clean and maintain, seamlessly jointed worktop.

Corian can be supplied with sinks of the same material with smooth, seamless jointing to the worktop.

Alternative solid surface materials such as Polylab are also available. These materials look and perform in a similar way to Corian.

Octopods can be supplied with solid grade laminate worktops such as Trespa. A widely used, easy to clean material with good impact resistance and which is very hard wearing.

Hardwood is available and other materials such as plastic laminate can also be used where there is limited use of water and where chemicals are not in use.



## Fume Cupboards

S+B manufacture and install a range of ducted and mobile fume cupboards in compliance with DN29, BB88, CLEAPSS requirements and fully tested to BS14175.





## Science Furniture Alternatives

- The Crescent – a new generation forward facing bench row system with contemporary appeal.
- Saturn/Mercury – circular and oval workstations for collaborative work, chalk and talk and increased circulation space.
- Xenium – a Service Tower and Table system which addresses the noise, disruption and damage to the floor associated with some Tower/Table systems.
- The Wing System – specifically designed for teachers who prefer a conventional arrangement but with contemporary appeal.

### Worktop Options

- Solid Surfaces such as Corian and Polylab provide a modern attractive, impervious and renewable worktop.
- Solid Grade Laminate such as Trespa provides a very hard wearing surface with a modern appearance.
- Tropical Hardwood such as Iroko provides a tough, durable and repairable worktop for those who prefer natural materials.
- Plastic Laminate provides a low cost option for areas such as Physics and Electronics where there is limited use of liquids and chemicals.



Wing System

## A Turnkey Package

**At S+B we work with you to provide the ideas, solution and final outcome completely free of charge and obligation. From initial consultation of designs, including CAD and 3D drawings, allowing you to view the solution before manufacture.**

S+B provide the answer - stripping out and removal of old furniture, reinstatement of mechanical and electrical services – supplying and fitment of new flooring, suspended ceilings, lighting, interactive whiteboards, decoration and installation of new furniture.

From a single space to a complete refurbishment, we create design that works.

## S+B Full Product Range

### **Furniture For Learning**

The experience gained over 30 years servicing all market sectors has given S+B a project management capability which is second to none. S+B specialise in design led development, manufacture and installation of schools furniture systems for Science, Design, Control, Information and Food Technology as well as cross curricula general classroom furniture.

### **Fume Cupboards & Lab Furniture**

S+B have over 30 years experience in the design, manufacture and installation of high specification modular and bespoke fume cupboards and lab furniture for Pharmaceutical R&D, Healthcare, Higher Education, Food & Beverages, Utilities and industry.

**Visit our website for more details and alternative designs - [www.splusb.co.uk](http://www.splusb.co.uk)**



**British made**

Designed and Manufactured at our factory in Manchester.

Labtec Street, Swinton  
Manchester M27 8SE

t: +44 (0)161 793 9333  
f: +44 (0)161 728 9149

e: [sales@splusb.co.uk](mailto:sales@splusb.co.uk)  
[www.splusb.co.uk](http://www.splusb.co.uk)